

Testing and remote access to embedded system

DPI/LVDS display output

Marek Vasut

June 28th, 2023

Table of content

- ▶ Motivation and why own hardware
- ▶ Display busses and capture options
- ▶ Approaches to the problem at hand
- ▶ Hardware build and testing
- ▶ LVDS encore
- ▶ Wrap up

Marek Vasut

- ▶ U-Boot bootloader custodian
- ▶ Linux kernel developer
- ▶ OE contributor
- ▶ FPGA hobbyist
- ▶ Consultant

Motivation

- ▶ SoM vendor development kit panel (re)testing
 - ▶ Too many panel options for each development kit
 - ▶ Testing them all means constant unplugging and replugging
 - ▶ Eventually the connector fails ...
- ▶ Remote access
 - ▶ Sometimes it is not viable to ship hardware
 - ▶ Hardware in limited quantity or early prototype stage ...
 - ▶ Sometimes it is convenient to put the hardware in rack and use remote access from anywhere
- ▶ CI testing
 - ▶ Automated SoM IO test in production is a must
 - ▶ Automated test of all available panels on each update is great
 - ▶ Automated testing improves confidence in release quality

Need Device which is plugged in once and can do all of the above.

Available options

- ▶ Grab fbdev content and stream it over e.g. ethernet

cons f1 Does not work (well) with modern DRM subsystem
(fbdev is deprecated for over a decade)

cons f2 A fully assembled frame buffer may not even exist in DRAM

cons f3 Does not provide any information about the situation past the video buffer in DRAM (CRTC/BRIDGE(s)/CONNECTOR(s)),
i.e. the pixels which are sent to the panel itself

- ▶ Weston RDP backend

cons w1 Overhead of assembling and payloading buffers to RDP stream

cons w2 Same as f3 above, no information past DRAM buffer

- ▶ DRM subsystem CRTC CRC support

- ▶ CRTC on some SoCs is capable of returning CRC of currently scanned out frame

- ▶ Used for functional safety reasons (e.g. in automotive)

- ▶ Used by [igt-gpu-tools] for CI testing

cons c1 No full image available for inspection/remote access

cons c2 Similar to f3 above, no information past CRTC output

Need Capture the whole display output of the device.

Embedded systems display busses

DPI Display Parallel Interface

- ▶ Likely oldest and simplest of still used interfaces
- ▶ Clock line, 1..24+ data lines, HS/VS/DE sync signals
- ▶ Wild source to sink data line mapping
- ▶ Uses LVTTTL 3V3 signalling

FPD Flat Panel Display Link

- ▶ Uses LVDS – Low-Voltage Differential Signaling
- ▶ 1 differential clock lane + 3/4 differential data lanes
- ▶ Often incorrectly called LVDS
- ▶ FPD-Link is \approx serialization of DPI
- ▶ Fewer available bus formats (1x 18bit and 2x 24bit)

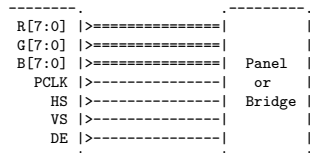
DSI MIPI Display Serial Interface

- ▶ Entirely different from the above
- ▶ MIPI Alliance standard
- ▶ Differential signaling, multiple PHYs, HS/LP mode
- ▶ Packet based protocol with back channel

DPI bus

- ▶ Clock, data, HS, VS, DE signals
- ▶ Closely matches panel behavior
- ▶ Maximum clock rate limited by too many data lines
- ▶ Often found in older panels
- ▶ Signal polarity and sampling edge is important
- ▶ Different modes – HS/VS or DE
- ▶ Widely varying pixel formats

DPI Host



DPI timing and synchronization

Linux 6.4-rc6

[Documentation/devicetree/bindings/display/panel/panel-timing.yaml]

/ HS \				
/	+	+	+	+
VS			^	
			vsync_len	
\			v	
	+	+	+	+
			^	
			vback_porch	
			v	
	+	+	+	+
			#	#
			#	#
	hsync	hback	#	# hfront
	len	porch	#	# porch
	<----->	<----->	#<----->	#<----->
			#	#
			#	#
			#	#
			#	#
			#	#
			#	#
	+	+	+	+
			^	
			vfront_porch	
			v	
	+	+	+	+

DPI capture

- ▶ What should the device capture ?
 - ▶ Active area only – fewer data, but incomplete
 - ▶ Everything including margins – great for CI test
- ▶ DPI panel maximum resolution $\approx 1024 \times 600$ 24bpp 60FPS
- ▶ Sampling other interesting signals
 - ▶ Use signals above the 24bpp
 - ▶ Capture 32bpp instead
 - ▶ Interesting signals include HS/VS/DE and even PWM...
- ▶ Data rate at 1024x600 32bpp 60 FPS including margins
 - ▶ Lets assume CDTech S070PWS19HP-FC21 panel
 - ▶ Total width $W(\text{pixels}) =$
 $HSA + HBP + HACT + HFP = 20 + 140 + 1024 + 160 = 1344$
 - ▶ Total height $H(\text{lines}) =$
 $VSA + VBP + VACT + VFP = 3 + 20 + 600 + 12 = 635$
 - ▶ Total data rate
 $D = W * H * (32\text{bpp}/8) * 60\text{FPS} \approx 204\text{MiB/s}$
- ▶ Data rate at 1920x1080 32bpp 60 FPS $\approx 500\text{MiB/s}$

Need high bandwidth interface

CDTech S070PWS19HP-FC21 panel timing

Linux 6.4-rc6

[drivers/gpu/drm/panel/panel-simple.c L1263]

```
1 static const struct drm_display_mode cdttech_s070pws19hp_fc21_mode = {
2     .clock = 51200,
3     .hdisplay = 1024,
4     .hsync_start = 1024 + 160,
5     .hsync_end = 1024 + 160 + 20,
6     .htotal = 1024 + 160 + 20 + 140,
7     .vdisplay = 600,
8     .vsync_start = 600 + 12,
9     .vsync_end = 600 + 12 + 3,
10    .vtotal = 600 + 12 + 3 + 20,
11    .flags = DRM_MODE_FLAG_NHSYNC | DRM_MODE_FLAG_NVSYNC,
12 };
```

High bandwidth interfaces

What is available on most PCs and can receive high bandwidth continuous stream of data?

Ethernet Gigabit

- pro Almost every PC has gigabit ethernet plug
- con Insufficient bandwidth of $\approx 125\text{MiB/s}$

Ethernet Multiple bonded gigabit ethernets

- con Too complex

Ethernet 10G ethernet

- con Seldom available on contemporary PCs
- con Complex and expensive on FPGA TX side

USB 2.0

- pro Almost every PC has USB 2.0 plug
- con Insufficient bandwidth of $\approx 60\text{MiB/s}$
 - Compression might help, but not useful for testing and CI

USB 3.0

- pro Almost every PC has USB 3.0 plug
- pro Enough bandwidth on root port of $\approx 625\text{MiB/s}$

Need to use USB 3.0 and avoid any downstream hubs

32bit input to USB 3.0 bridge chips

Existing 32bit-input-to-USB3.0 bridge chips:

FTDI FT602Q

- ▶ 32bit RX FIFO to USB 3.0 UVC (USB Video Class) device
- pro No need for firmware
- pro USB UVC device, behaves like a webcam
- con FT602Q is 100MHz or 66MHz clock source
- con Need asynchronous FIFO between DPI↔FT602Q

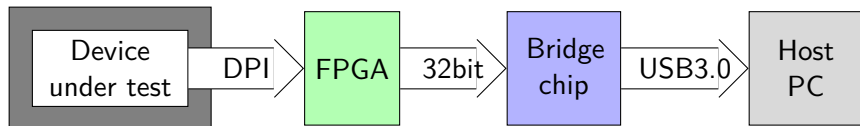
Cypress FX3

- ▶ 32bit general purpose interface, CPU, DMA, USB 3.0 device
- pro Flexible due to CPU and 32bit up to 100 MHz GP interface
- pro GP interface does support external clock input
- pro Familiar ARM926EJS ARMv5 core
- pro Documentation for the chip peripherals is good
- pro Firmware examples contain CPI camera to UVC video demo
- con CPI to UVC demo must be adapted and pixel format tweaked
- 👤 Not all of vendor firmware SDK runs on Linux
- 😱 Vendor firmware SDK is dubiously licensed outdated **blobware**

Multiple approaches

- ▶ DPI→FPGA→bridge as UVC→Host PC
 - ▶ Maximum compatibility
 - ▶ Native USB UVC support in most OSes (not enough)
 - ▶ FPGA adds to price and complexity
 - ▶ FX3 as UVC requires blobware firmware
 - ▶ FX3 input state machine design tool does not work on Linux
- ▶ DPI→bridge as FIFO→Host PC
 - ▶ Maximum simplicity
 - ▶ Requires custom host software (easy)
 - ▶ Read data from bridge
 - ▶ Display / write to file / pass to e.g. gstreamer

Failed UVC blobwork



Multiple problems:

1. UVC USB Video Class does not support varying resolution
2. Both FT602Q and FX3 in UVC mode expect CPI sensor input

UVC pixel format inflexibility

- ▶ USB UVC is USB-IF (Implementers Forum) standard
- ▶ Stream width, height, pixel format, bitrate, ...
all encoded in static USB descriptors
- ▶ Not all pixel formats supported by various OSes are part of the USB-IF standard
- ▶ Some pixel formats are non-standard extensions, usually poorly documented
- ▶ BGRX8888 extension pixel format now in Linux 6.1.y
media: uvcvideo: Add GUID for BGRA/X 8:8:8:8
- ▶ Cypress firmware can be patched to produce this format
- ▶ As far as I can tell, patch cannot be distributed due to SDK licensing

UVC resolution inflexibility

- ▶ UVC USB Video Class does not support changing resolution during streaming
 - ▶ The DPI input resolution may change at runtime or even fluctuate (during debugging)
 - ▶ Linux kernel `uvcvideo` driver expects continuous stream
 - ▶ Linux kernel `uvcvideo` driver checks line width
 - ▶ Frames with short lines dropped without module parameter:
`uvcvideo nodrop=1`
 - ▶ Both `gststreamer` and `ffmpeg` check V4L2 frame size
 - ▶ Short frames are dropped unless either is patched
- ☹ This is not really seamless experience

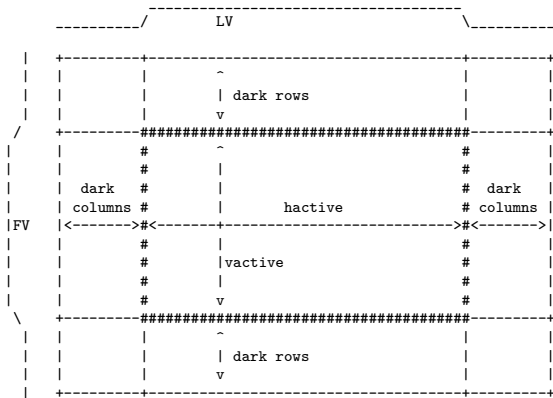
CPI timing and synchronization

- ▶ CPI uses two sync signals to denote active area with valid pixels

LV Line Valid – Indicates active columns ($\approx HFP + HSA + HBP$)

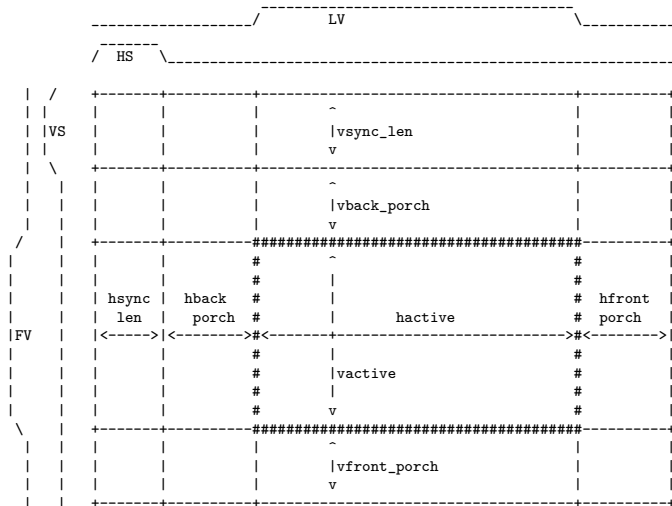
FV Frame Valid – Indicates valid rows ($\approx VFP + VSA + VBP$)

- ▶ Example: MT9P006 Pixel Array Structure + LV and FV

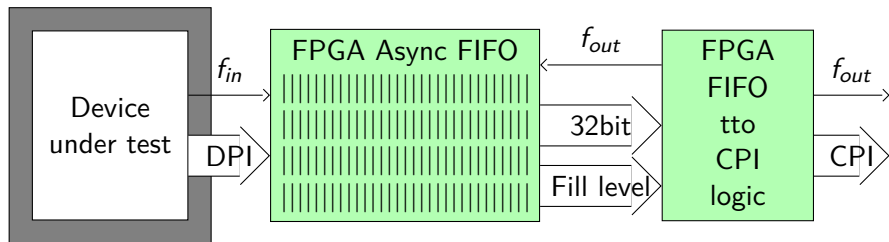


CPI vs. DPI timing

Need adapter which converts DPI sync signals to CPI sync signals



FPGA asynchronous FIFO



- ▶ Crossing clock domains with an Asynchronous FIFO
The ZipCPU by Gisselquist Technology
- ▶ A FIFO used to move wider data from one clock domain to another
- ▶ Width and depth often configurable

FPGA asynchronous FIFO implementation

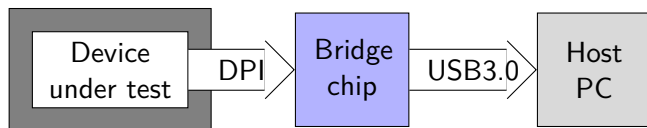
- ▶ Assume $f_{in} < f_{out}$
- ▶ Assume FIFO width is 32 bits and depth is slightly more than 1 full line worth of pixels
- ▶ FIFO fill level $\approx LV$
- ▶ When FIFO contains 1 line worth of input data, it can be flushed into the output bridge
- ▶ Padding to the width configured in the UVC descriptors is necessary
- ▶ Line counting to emulate FV is necessary
- ▶ The FV can be a short pulse (not a full line) for FX3 to recognize it
- ▶ If FIFO output does not produce data for too long \Rightarrow this is loss of signal
- ▶ FIFO must be carefully placed in FPGA and timing constraints are a much
- ▶ Altera Cyclone IV/E maxed out at $f_{out} \approx 65$ MHz

Failed UVC blobwork is failed

Summary:

- ▶ UVC was not a win due to necessary workarounds
- ▶ Firmware patching was extremely problematic
- ▶ DPI to CPI adapter using FPGA is convoluted

Success with bridge as FIFO



- ▶ FTDI FT601Q is 32bit FIFO to USB 3.0, but still clock source
- ▶ Cypress FX3 is capable of being a clock sink
- ▶ Capture raw byte stream using FX3, process on Host PC
- ▶ The FX3 firmware and tooling is still a problem
- ▶ The vendor tooling is a problem

- ▶ sigrok project

The sigrok project aims at creating a portable, cross-platform, Free/Libre/Open-Source signal analysis software suite that supports various device types (e.g. logic analyzers, oscilloscopes, and many more).

- ▶ fx2lafw

fx2lafw is an open-source firmware for Cypress FX2 chips which makes them usable as simple logic analyzer and/or oscilloscope hardware.

If only there was similar firmware for Cypress FX3.

- ▶ fx3lafw [link] by **Marcus Comstedt**

This is an open source firmware for using a Cypress FX3 USB controller as a logic analyzer with sigrok. It does not rely on any libraries or tools provided by Cypress under license.

- ▶ Suggested by **t4nk** at sigrok channel during unrelated discussion – **THANK YOU!**

- ▶ No need to use the Cypress blobware anymore

- ▶ Compatible with fx2lafw with extension to support faster sampling

- ▶ Uses clock generated by FX3 to oversample the 32bit bus

- ▶ sigrok support is implemented by a few easy patches to libsigrok [link], currently outdated, but rebase is easy

What is missing

- ▶ Switch the `fx3lafw` to use external clock from DPI
- ▶ Capture data using sigrok and pipe them into e.g. gstreamer
- ▶ Replace sigrok with something more lightweight
- ▶ Build more permanent hardware setup

Patching fx3lafw

- ▶ Clock direction bit must be flipped
- ▶ SYNC/SPEED bits must be enabled
Needed for higher speed capture and capture synchronous to input PCLK
- ▶ DLL must be disabled else slight data loss happens
Resulting image crawls slowly to the left and wraps around
- ▶ Input PCLK invert configuration (for selection of PCLK sampling edge) is a good tunable to have, implemented using libusb control endpoint, like other fx2lafw configuration messages
- ▶ Use libusb fxload example tool to load firmware into FX3 (or run sigrok-cli twice, the first time will fail to re-enumerate the FX3 as it changed bus from USB 2.0 to USB 3.0 and libsigrok cannot handle that yet)
- ▶ Patched fx3lafw [\[link\]](#)

Build and use fx3lafw

```
# Udev rule (use 'udevadm control -R' to reload the rules once added)
$ cat /etc/udev/rules.d/92-cypress.rules
SUBSYSTEM=="usb", ATTRS{idVendor}=="04b4", ATTRS{idProduct}=="00f3", MODE="0666"

fx3lafw $ git clean -fqdx
fx3lafw $ make -j$(nproc)
# For sigrok purposes
fx3lafw $ cp fx3lafw-cypress-fx3.fw /usr/share/sigrok-firmware/
# For libusb/fxload purposes
fx3lafw $ cp -Lv fx3lafw-cypress-fx3.fw fx3lafw-cypress-fx3.img
fx3lafw $ /libusb/examples/fxload -t fx3 -i fx3lafw-cypress-fx3.img
```

sigrok continuous capture

- ▶ The `sigrok-cli` tool supports triggering capture from command line
- ▶ Captured data can be stored into a file in different formats:
 - ▶ `-O binary` or `-O csv ...`
 - ▶ Capture into file is useful for detailed analysis
 - ▶ The file can be a named pipe (FIFO) for realtime visualization
 - ▶ FIFO needs a consumer too
- ▶ `sigrok` supports software triggers `-t channel`, useful to trigger on edge of sync signal(s)
- ▶ **Gerhard Sittig** of `sigrok` fame suggests `--continuous` option

```
$ mkfifo /tmp/fifo
$ sigrok-cli -D -d fx2lafw --continuous --channels \
D0,D1,D2,D3,D4,D5,D6,D7,D8,D9,D10,D11,D12,D13,D14,D15,D16,\
D17,D18,D19,D20,D21,D22,D23,D24,D25,D26,D27,D28,D29,D30,D31 \
-t D24=r --config samplerate=192m -l 5 -o /tmp/fifo -O binary
```

Gstreamer FIFO consumer

- ▶ The last step is to create FIFO consumer that can visualize the data
- ▶ Gstreamer is a good candidate with `gst-launch-1.0` tool
- ▶ Easily assemble a pipeline
- ▶ It is necessary to know the input stream resolution, otherwise the visualization will be distorted
- ▶ Lets assume CDTech S070PWS19HP-FC21 panel again
1024x600 active area, 1344x635 including margins

```
$ W=1344 H=635 S=$((4*$W*$H)) ; gst-launch-1.0 \  
  filesrc location=/tmp/fifo blocksize=${S} ! \  
  video/x-raw,width=${W},height=${H},framerate=60/1,format=RGBx ! \  
  queue ! \  
  videoconvert ! \  
  autovideosink
```

Replacing the RX with light weight tool

- ▶ A more light-weight tool called `fx3stream` is available at [\[link\]](#)
- ▶ Based on `libusb` with optional `xlib` and `gststreamer` dependencies
- ▶ The tool is currently rudimentary
- ▶ Provides three sink options – FIFO, Gstreamer, X11 window
- ▶ Gstreamer sink is an `appsink` which push feeds gstreamer pipeline
- ▶ Provides frame rate counter (using gstreamer `fpsdisplaysink`)
- ▶ Provides sync signals visualization
- ▶ Compile, upload `fx3lafw` to FX3 using `fxload`, run the tool

```
Usage: ./stream-gst <width> <height> <pclkpol> <vsdetpol> <colorsync>
width ..... width of input frame, including HSA HBP HACT HFP
height ..... height of input frame, including VSA VBP VACT VFP
pclkpol ..... 0 - PCLK sampled on RISING edge
                1 - PCLK sampled on FALLING edge
vsdetpol .... 0 - VSYNC lock on RISING edge
                1 - VSYNC lock on FALLING edge
colorsync ... 0 - do not color sync signals in frame
                1 - color active HIGH sync signals
                2 - color active LOW sync signals
GSTFPS=1 environment variable enables frame rate counter overlay
```

Demo – Linux is booting

- ▶ Chefree CH101OLHLWH-002 1280x800 panel connected via DPI-to-LVDS bridge. The capture is attached to the DPI, i.e. before the DPI-to-LVDS bridge.
- ▶ Host: \$./stream-gst 1440 823 0 0 0

```

)
)
2.970011) imx-drm display-subsystem: bound imx-ipuv3-crtc.3 (ops 0xc0b5b744
)
2.977431) imx-drm display-subsystem: bound imx-ipuv3-crtc.6 (ops 0xc0b5b744
)
2.984815) imx-drm display-subsystem: bound imx-ipuv3-crtc.7 (ops 0xc0b5b744
)
2.992193) imx-drm display-subsystem: bound disp0 (ops 0xc0b5b9c0)
2.998992) [drm] Initialized imx-drm 1.0.0 20120507 for display-subsystem on
minor 0
[ 3.019032] random: crng init done
[ 3.247258] Console: switching to colour frame buffer device 160x50
[ 3.269980] imx-drm display-subsystem: [drm] fb0: imx-drmfb frame buffer device
[ 3.284346] etnaviv etnaviv: bound 130000.gpu (ops 0xc0b6681c)
[ 3.290513] etnaviv etnaviv: bound 134000.gpu (ops 0xc0b6681c)
[ 3.296681] etnaviv etnaviv: bound 2204000.gpu (ops 0xc0b6681c)
[ 3.302725] etnaviv-gpu 130000.gpu: model: 6C2000, revision: 5100
[ 3.309170] etnaviv-gpu 134000.gpu: model: 6C320, revision: 5007
[ 3.315363] etnaviv-gpu 2204000.gpu: model: 6C355, revision: 1215
[ 3.321573] etnaviv-gpu 2204000.gpu: Ignoring GPU with UG and FE2.0
[ 3.328333] [drm] Initialized etnaviv 1.3.0 20151214 for etnaviv on minor 1
[ 3.339896] using random self ethernet address
[ 3.344421] using random host ethernet address
[ 3.349430] usb0: HOST MAC 76:2e:bd:a5:ee:75
[ 3.353796] usb0: MAC 42:37:6c:92:11:71
[ 3.357749] using random self ethernet address
[ 3.362282] using random host ethernet address
[ 3.369120] g_ether gadget.0: Ethernet Gadget, version: Memorial Day 2000
[ 3.370244] g_ether gadget.0: g_ether ready
[ 3.386873] /mx.usb 2104200.usb: No over current polarity defined
[ 3.399380] ci_hdrc ci_hdrc.1: EHCI Host Controller
[ 3.406594] ci_hdrc ci_hdrc.1: new USB bus registered, assigned bus number 1
[ 3.430677] ci_hdrc ci_hdrc.1: USB 2.0 started, EHCI 1.00
[ 3.439234] hub 1-0:1.0: USB hub found
[ 3.445495] hub 1-0:1.0: 1 port detected
[ 3.454989] imx_thermal 28c0000.aatop:tempmon: Automotive CPU temperature grade - max:125C critical:120C passive:115C
[ 3.470344] ALSA device list:
[ 3.470423] No soundcards found.
[ 3.510260] EXT4-fs (mxcblkp1): mounted filesystem with ordered data mode. Quota mode: disabled.
[ 3.524602] UFS: Mounted root (ext4 filesystem) on device 179:1.
[ 3.537138] devtmpfs: mounted
[ 3.548214] Freeing unused kernel image (initramfs) memory: 1024K
[ 3.557512] Run /sbin/init as init process
[ 3.932432] systemd[1]: System time before build time, advancing clock.
-

```

Demo – Linux, FPS overlay

► Host: \$ GSTFPS=1 ./stream-gst 1440 823 0 0 0

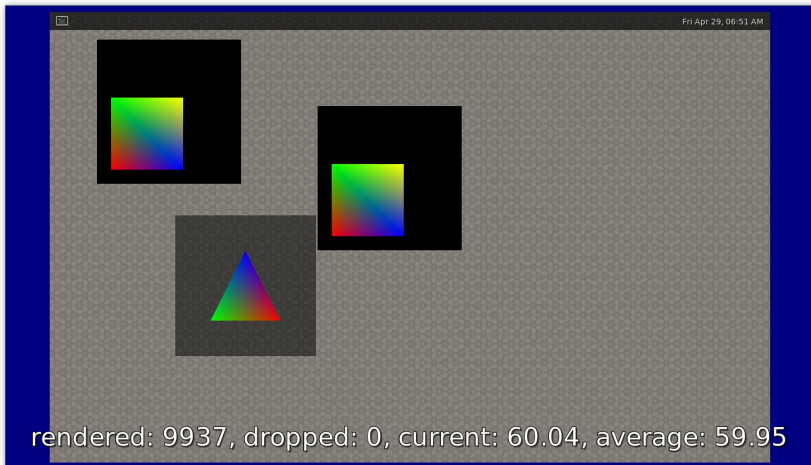


```
[ 2.980778] imx-drm display-subsystem: bound imx-ipu3-crtc.7 (ops 0xc0b5b744)
[ 2.981761] imx-drm display-subsystem: bound disp0 (ops 0xc0b5b9c0)
[ 2.994941] [drm] Initialized imx-drm 1.0.0 20120507 for display-subsystem on
minor 0
[ 3.016515] random: crng init done
[ 3.245023] Console: switching to colour frame buffer device 160x50
[ 3.267756] imx-drm display-subsystem: [drm] fb0: imx-drm-drmfb frame buffer device
[ 3.282181] etnaviv etnaviv: bound 130000.gpu (ops 0xc0b6681c)
[ 3.288367] etnaviv etnaviv: bound 134000.gpu (ops 0xc0b6681c)
[ 3.294525] etnaviv etnaviv: bound 2204000.gpu (ops 0xc0b6681c)
[ 3.300566] etnaviv-gpu 130000.gpu: model: 6C2000, revision: 5100
[ 3.307018] etnaviv-gpu 134000.gpu: model: 6C320, revision: 5007
[ 3.313209] etnaviv-gpu 2204000.gpu: model: 6C355, revision: 1215
[ 3.319410] etnaviv-gpu 2204000.gpu: Ignoring GPU with VG and FE2.0
[ 3.326147] [drm] Initialized etnaviv 1.3.0 20151214 for etnaviv on minor 1
[ 3.337713] using random self ethernet address
[ 3.342299] using random host ethernet address
[ 3.347240] usb0: HOST MAC 1a:7d:ae:b8:7e:70
[ 3.351616] usb0: MAC 6a:36:26:f8:09:15
[ 3.355571] using random self ethernet address
[ 3.360104] using random host ethernet address
[ 3.367092] g_ether gadget.0: Ethernet Gadget, version: Memorial Day 2000
[ 3.376216] g_ether gadget.0: g_ether ready
[ 3.384063] imx_usb 2104200.usb: No over current polarity defined
[ 3.392303] ci_hdrc ci_hdrc.1: EHCI Host Controller
[ 3.404692] ci_hdrc ci_hdrc.1: new USB bus registered, assigned bus number 1
[ 3.420860] ci_hdrc ci_hdrc.1: USB 2.0 started, EHCI 1.00
[ 3.436596] hub 1-0:1.0: USB hub found
[ 3.442703] hub 1-0:1.0: 1 port detected
[ 3.452394] imx_thermal 20c8000.anatop:tempmon: autotune: CPU temperature grade - max:125C critical:120C passive:115C
[ 3.462580] ALSA device list:
[ 3.473394]  No soundcards found.
[ 3.506075] EXT4-fs (nvchkip1): mounted filesystem with ordered data mode. Quota mode: disabled.
[ 3.519715] UFS: Mounted root (ext4 filesystem) on device 179:25.
[ 3.532399] devtmpfs: mounted
[ 3.543131] Freeing unused kernel image (initramfs) memory: 1024K
[ 3.552763] Run /sbin/init as init process
[ 3.927612] systemd[1]: System time before build time, advancing clock.
[ 3.989443] systemd[1]: systemd 250.5+ running in system mode (+PAM -AUDIT -SELINUX -APPARMOR +IMA -SMACK -SECOPM -GCRYPT -GNUTLS -OPENSSL -ACL +BLKID -CURL
+ELFTUTILS -FBSD -IDM2 -IDM -IPTC +STRIP +LDB +LIBCRYPTSETUP +LIFD +DISK -PCRE2 -PQALITY -PIIKIT -QRENCODE -R2LP2 -LZ4 -XZ -ZLIB +ZSTD -BPF_FRAMEWORK +XKCCOMMON +UTM
+XZ +ZSTD -BPF_FRAMEWORK +XKCCOMMON +UTM
[ 4.061391] systemd[1]: Hostname set to <ch-imx-dcon-picoitx>.
```

rendered: 61 dropped: 0, current: 59.63, average: 60.02

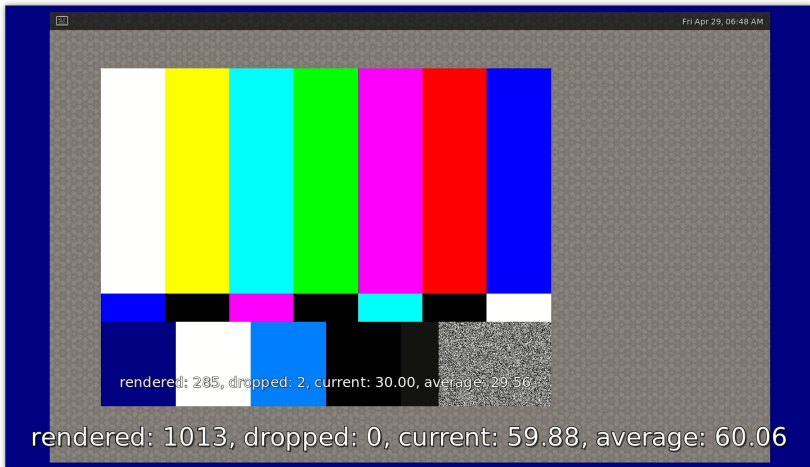
Demo – Linux, Sync signals visualization and FPS

- ▶ Great for CI and debugging purposes.
- ▶ Device: `weston-simple-dmabuf-egl & weston-simple-dmabuf-egl & weston-simple-egl`
- ▶ Host: `$ GSTFPS=1 ./stream-gst 1440 823 0 0 2`



Demo – Weston, with FPS, with FPS

- ▶ Device: `gst-launch-1.0 videotestsrc ! video/x-raw,width=800,height=600 ! queue ! fpsdisplaysink video-sink=autovideosink`
- ▶ Host: `$ GSTFPS=1 ./stream-gst 1440 823 0 0 2`



Loss of signal handling

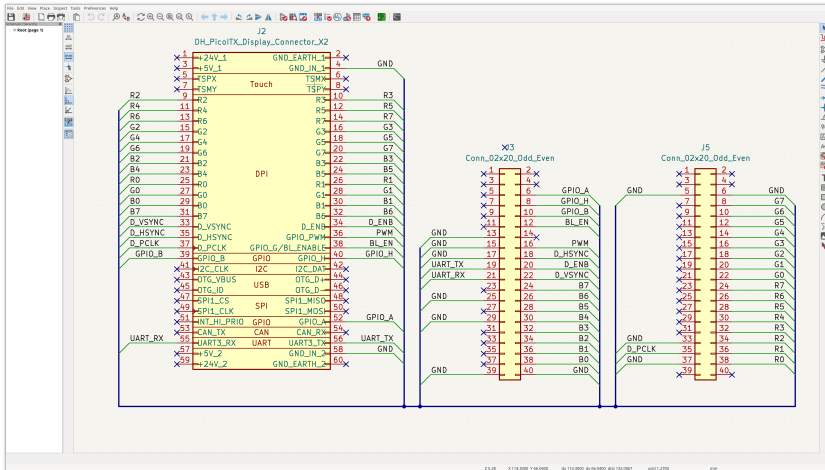
- ▶ The FX3 expects continuous PCLK input
- ▶ Loss of signal triggers GPIF PIB interrupt and stop of capture
- ▶ Patch out that interrupt generation
- ▶ The FX3 also contains clock loss detection interrupt
- ▶ Test the clock loss interrupt generation, it does work
- ▶ With patched out GPIF PIB stop interrupt, clock loss interrupt is not needed
- ▶ FX3 is not sending any data on clock loss, and recovers when clock are back

Hardware

- ▶ The Cypress CYUSB3KIT-003 is convenient
- ▶ It provides two 2x20 2.54mm plus spaced 41.5mm apart
- ▶ It is possible to use easy to get 2.54mm M-x cables
- ▶ With fly wiring, higher clock frequencies are a problem
- ▶ Making permanent hardware connection is a matter of trivial adapter PCB
- ▶ Trivial adapter PCB can be designed in KiCad and manufactured at PCB house
- ▶ PCB houses these days can do a lot for you, even populate the PCB ...
- ▶ Make sure you check your newly populated PCB for shorts ...

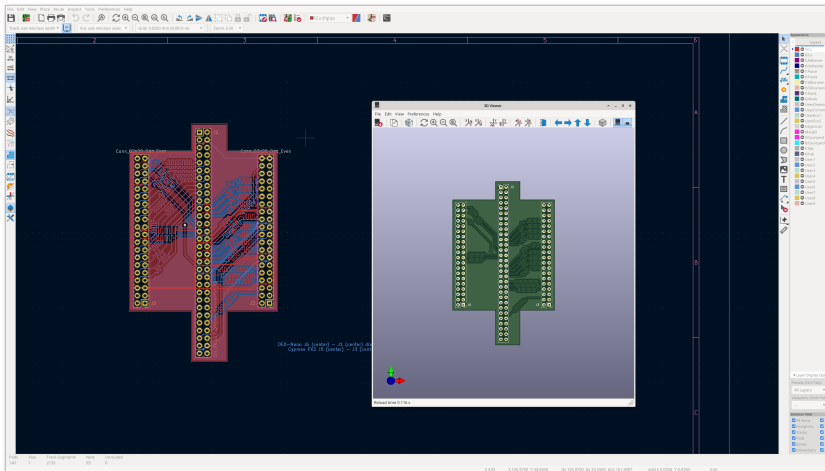
KiCad – Adapter board schematic

Make sure you run ERC

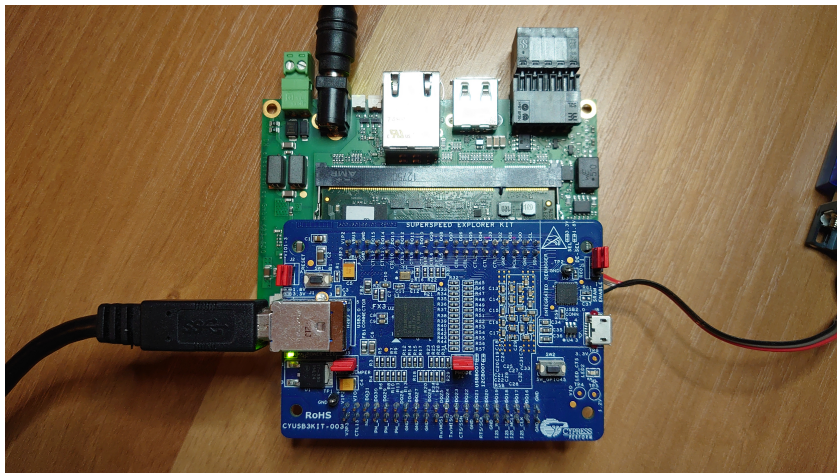


KiCad – Adapter board PCB

Make sure you run DRC



KiCad – Entire assembly

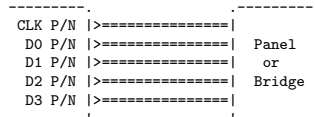


Stream from the device looks as expected, no surprises there.

LVDS bus

- ▶ Basically a serialization of DPI bus
- ▶ ANSI/TIA/EIA-644-A
- ▶ Pixel format limited to three options:
 - ▶ jeida-18 (SPWG, LDI, VESA)
 - ▶ jeida-24 (DSIM, LDI)
 - ▶ vesa-24 (VESA)
- ▶ Differential signalling, 1 clock lane, 3 or 4 data lanes
- ▶ High resolution panels often use dual-link LVDS

LVDS Host



LVDS bus

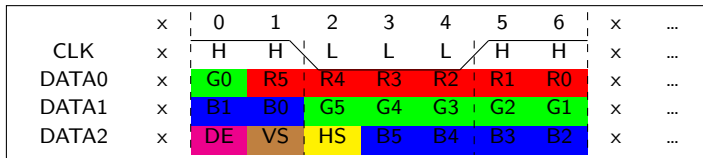


Figure: LVDS JEIDA-18 3-lane LVDS bus

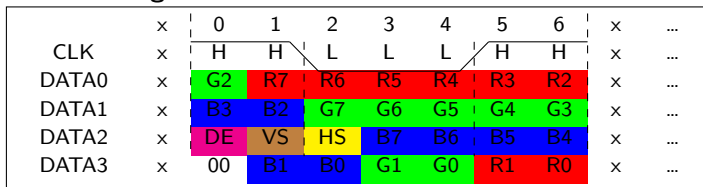


Figure: LVDS JEIDA-24 4-lane LVDS bus

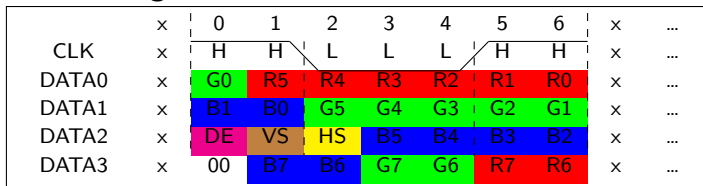


Figure: LVDS VESA-24 4-lane LVDS bus

LVDS to DPI

- ▶ LVDS to DPI deserializer chips do exist
- ▶ For example TI DS90CF384, OnSemi FIN3386, Thine THC63LVDF84B ...
- ▶ Use one of the chips and convert LVDS problem to already solved DPI problem
- ▶ Use capacitors close to the chip supplies
- ▶ Carefully route LVDS differential lines
- ▶ LVDS lines require 100Ω termination

Dual-link LVDS

- ▶ Uses 8 differential pairs, transmits 2 pixels at a time
- ▶ Used to drive 1920x1080 FullHD panels where single-link LVDS does not suffice
- ▶ Pixels always sent as odd-even pixel pair
- ▶ Likely can be captured using TI DS90CF388 de-serializer and two FX3
- ▶ Pixel reassembly on Host PC, possibly using Gstreamer ORC SIMD

Demo – Linux is booting

- ▶ Lets assume EDT ETML0700Y5DHA panel
- ▶ Host: \$./stream-gst 1344 635 0 1 0

```
stream-gst
[ 0.000000] rcu: RCU event tracing is enabled.
[ 0.000000] Rude variant of Tasks RCU enabled.
[ 0.000000] rcu: RCU calculated value of scheduler-enlistment delay is 25 jiffies.
[ 0.000000] NR_IRQS: 64, nr_irqs: 64, preallocated irq: 0
[ 0.000000] GICv3: GIC: Using split EOI/Deactivate mode
[ 0.000000] GICv3: 160 SPIs implemented
[ 0.000000] GICv3: 0 Extended SPIs implemented
[ 0.000000] Root IRQ handler: gic_handle_irq
[ 0.000000] GICv3: GICv3 features: 16 PPIs
[ 0.000000] GICv3: CPU0: found redistributor 0 region 0:0x0000000038800000
[ 0.000000] ITS: No ITS available, not enabling LPIs
[ 0.000000] rcu: srcu_init: Setting srcu_struct sizes based on contention.
[ 0.000000] arch_timer: cp15 timer(s) running at 0.00MHz (phys).
[ 0.000000] clocksource: arch_sys_counter: mask: 0xffffffffffffff max_cycles: 0x148544df40, max_idle_ns: 440795202120 ns
[ 0.000000] sched_clock: 56 bits at 0MHz, resolution 125ns, wraps every 2199023255500ns
[ 0.004220] Console: colour dummy device 80x25
[ 0.004631] Calibrating delay loop (skipped), value calculated using timer frequency.. 16.00 BogoMIPS (lpj=32000)
[ 0.004791] pid_max: default: 32768 minimum: 301
[ 0.005741] LSM: Security Framework initializing
[ 0.006831] Mount-cache hash table entries: 8192 (order: 4, 65536 bytes, linear)
[ 0.007021] Mountpoint-cache hash table entries: 8192 (order: 4, 65536 bytes, linear)
[ 0.002250] cblst_init_generic: Setting adjustable number of callback queues.
[ 0.002370] cblst_init_generic: Setting shift to 2 and lim to 1.
[ 0.002592] rcu: Hierarchical SRCU implementation.
[ 0.002598] rcu: Max phase no-delay instances is 1000.
[ 0.003900] smp: Bringing up secondary CPUs ...
[ 0.004593] Detected VIPT I-cache on CPU1
[ 0.004671] GICv3: CPU1: found redistributor 1 region 0:0x00000000388a0000
[ 0.004782] CPU1: Brought secondary processor 0x000000001 (0x410fd034)
[ 0.005373] Detected VIPT I-cache on CPU2
[ 0.005439] GICv3: CPU2: found redistributor 2 region 0:0x00000000388c0000
```

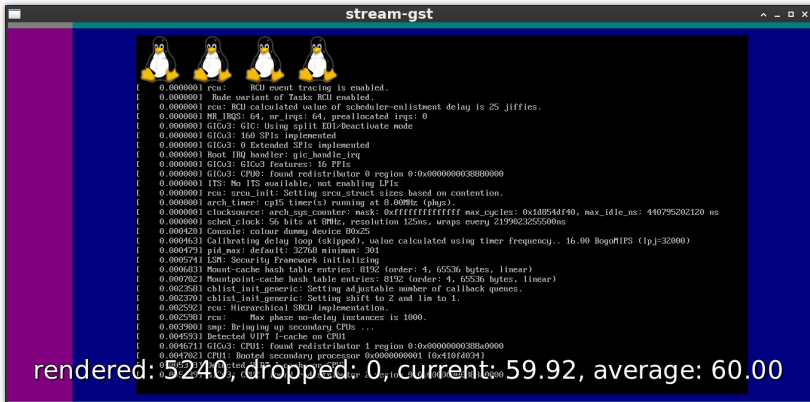

Demo – Linux, FPS overlay

► Host: \$ GSTFPS=1 ./stream-gst 1344 635 0 1 0

```
stream-gst
[ 0.000000] rcu: RCU event tracing is enabled.
[ 0.000000] Rude variant of Tasks RCU enabled.
[ 0.000000] rcu: RCU calculated value of scheduler-enlistment delay is 25 jiffies.
[ 0.000000] NR_IRQS: 64, nr_irqs: 64, preallocated irqs: 0
[ 0.000000] GICv3: GIC: Using split EOI/Deactivate mode
[ 0.000000] GICv3: 160 SPIs implemented
[ 0.000000] GICv3: 0 Extended SPIs implemented
[ 0.000000] Root IRQ handler: gic_handle_irq
[ 0.000000] GICv3: GICv3 features: 16 PPIs
[ 0.000000] GICv3: CPU0: found redistributor 0 region 0:0x0000000038880000
[ 0.000000] ITS: No ITS available, not enabling LPIs
[ 0.000000] rcu: srcu_init: Setting srcu_struct sizes based on contention.
[ 0.000000] arch_timer: cp15 timer(s) running at 8.00MHz (phys).
[ 0.000000] clocksource: arch_sys_counter: mask: 0xffffffffffffff max_cycles: 0x1d854df40, max_idle_ns: 440795202120 ns
[ 0.000000] sched_clock: 56 bits at 8MHz, resolution 125ns, wraps every 219902325590ns
[ 0.000420] Console: colour dummy device 80x25
[ 0.000463] Calibrating delay loop (skipped), value calculated using timer frequency.. 16.00 BogoMIPS (lpj=32000)
[ 0.000479] pid_max: default: 32768 minimum: 301
[ 0.000574] LSM: Security Framework initializing
[ 0.000643] Mount-cache hash table entries: 8192 (order: 4, 65536 bytes, linear)
[ 0.000782] Mountpoint-cache hash table entries: 8192 (order: 4, 65536 bytes, linear)
[ 0.002350] cblst_init_generic: Setting adjustable number of callback queues.
[ 0.002370] cblst_init_generic: Setting shift to 2 and lim to 1.
[ 0.002592] rcu: Hierarchical SRCU implementation.
[ 0.002593] rcu: Max phase no-delay instances is 1000.
[ 0.003901] smp: Bringing up secondary CPUs ...
[ 0.004593] Detected VTPI L-cache on CPU1
[ 0.004671] GICv3: CPU1: found redistributor 1 region 0:0x0000000038880000
[ 0.004782] CPU1: Biontec secondary processor 0x0000000001 [0x410f4034]
[ 0.004782] Detected VTPI L-cache on CPU1
[ 0.004782] CPU3: found redistributor 3 region 0:0x0000000038880000
[ 0.004782] CPU3: Biontec secondary processor 0x0000000003 [0x410f4034]
[ 0.004782] Detected VTPI L-cache on CPU3
[ 0.004782] CPU5: found redistributor 5 region 0:0x0000000038880000
[ 0.004782] CPU5: Biontec secondary processor 0x0000000005 [0x410f4034]
[ 0.004782] Detected VTPI L-cache on CPU5
[ 0.004782] CPU7: found redistributor 7 region 0:0x0000000038880000
[ 0.004782] CPU7: Biontec secondary processor 0x0000000007 [0x410f4034]
[ 0.004782] Detected VTPI L-cache on CPU7
[ 0.004782] CPU9: found redistributor 9 region 0:0x0000000038880000
[ 0.004782] CPU9: Biontec secondary processor 0x0000000009 [0x410f4034]
[ 0.004782] Detected VTPI L-cache on CPU9
[ 0.004782] CPU11: found redistributor 11 region 0:0x0000000038880000
[ 0.004782] CPU11: Biontec secondary processor 0x0000000011 [0x410f4034]
[ 0.004782] Detected VTPI L-cache on CPU11
[ 0.004782] CPU13: found redistributor 13 region 0:0x0000000038880000
[ 0.004782] CPU13: Biontec secondary processor 0x0000000013 [0x410f4034]
[ 0.004782] Detected VTPI L-cache on CPU13
[ 0.004782] CPU15: found redistributor 15 region 0:0x0000000038880000
[ 0.004782] CPU15: Biontec secondary processor 0x0000000015 [0x410f4034]
[ 0.004782] Detected VTPI L-cache on CPU15
[ 0.004782] CPU17: found redistributor 17 region 0:0x0000000038880000
[ 0.004782] CPU17: Biontec secondary processor 0x0000000017 [0x410f4034]
[ 0.004782] Detected VTPI L-cache on CPU17
[ 0.004782] CPU19: found redistributor 19 region 0:0x0000000038880000
[ 0.004782] CPU19: Biontec secondary processor 0x0000000019 [0x410f4034]
[ 0.004782] Detected VTPI L-cache on CPU19
[ 0.004782] CPU21: found redistributor 21 region 0:0x0000000038880000
[ 0.004782] CPU21: Biontec secondary processor 0x0000000021 [0x410f4034]
[ 0.004782] Detected VTPI L-cache on CPU21
[ 0.004782] CPU23: found redistributor 23 region 0:0x0000000038880000
[ 0.004782] CPU23: Biontec secondary processor 0x0000000023 [0x410f4034]
[ 0.004782] Detected VTPI L-cache on CPU23
[ 0.004782] CPU25: found redistributor 25 region 0:0x0000000038880000
[ 0.004782] CPU25: Biontec secondary processor 0x0000000025 [0x410f4034]
[ 0.004782] Detected VTPI L-cache on CPU25
[ 0.004782] CPU27: found redistributor 27 region 0:0x0000000038880000
[ 0.004782] CPU27: Biontec secondary processor 0x0000000027 [0x410f4034]
[ 0.004782] Detected VTPI L-cache on CPU27
[ 0.004782] CPU29: found redistributor 29 region 0:0x0000000038880000
[ 0.004782] CPU29: Biontec secondary processor 0x0000000029 [0x410f4034]
[ 0.004782] Detected VTPI L-cache on CPU29
[ 0.004782] CPU31: found redistributor 31 region 0:0x0000000038880000
[ 0.004782] CPU31: Biontec secondary processor 0x0000000031 [0x410f4034]
[ 0.004782] Detected VTPI L-cache on CPU31
[ 0.004782] CPU33: found redistributor 33 region 0:0x0000000038880000
[ 0.004782] CPU33: Biontec secondary processor 0x0000000033 [0x410f4034]
[ 0.004782] Detected VTPI L-cache on CPU33
[ 0.004782] CPU35: found redistributor 35 region 0:0x0000000038880000
[ 0.004782] CPU35: Biontec secondary processor 0x0000000035 [0x410f4034]
[ 0.004782] Detected VTPI L-cache on CPU35
[ 0.004782] CPU37: found redistributor 37 region 0:0x0000000038880000
[ 0.004782] CPU37: Biontec secondary processor 0x0000000037 [0x410f4034]
[ 0.004782] Detected VTPI L-cache on CPU37
[ 0.004782] CPU39: found redistributor 39 region 0:0x0000000038880000
[ 0.004782] CPU39: Biontec secondary processor 0x0000000039 [0x410f4034]
[ 0.004782] Detected VTPI L-cache on CPU39
[ 0.004782] CPU41: found redistributor 41 region 0:0x0000000038880000
[ 0.004782] CPU41: Biontec secondary processor 0x0000000041 [0x410f4034]
[ 0.004782] Detected VTPI L-cache on CPU41
[ 0.004782] CPU43: found redistributor 43 region 0:0x0000000038880000
[ 0.004782] CPU43: Biontec secondary processor 0x0000000043 [0x410f4034]
[ 0.004782] Detected VTPI L-cache on CPU43
[ 0.004782] CPU45: found redistributor 45 region 0:0x0000000038880000
[ 0.004782] CPU45: Biontec secondary processor 0x0000000045 [0x410f4034]
[ 0.004782] Detected VTPI L-cache on CPU45
[ 0.004782] CPU47: found redistributor 47 region 0:0x0000000038880000
[ 0.004782] CPU47: Biontec secondary processor 0x0000000047 [0x410f4034]
[ 0.004782] Detected VTPI L-cache on CPU47
[ 0.004782] CPU49: found redistributor 49 region 0:0x0000000038880000
[ 0.004782] CPU49: Biontec secondary processor 0x0000000049 [0x410f4034]
[ 0.004782] Detected VTPI L-cache on CPU49
[ 0.004782] CPU51: found redistributor 51 region 0:0x0000000038880000
[ 0.004782] CPU51: Biontec secondary processor 0x0000000051 [0x410f4034]
[ 0.004782] Detected VTPI L-cache on CPU51
[ 0.004782] CPU53: found redistributor 53 region 0:0x0000000038880000
[ 0.004782] CPU53: Biontec secondary processor 0x0000000053 [0x410f4034]
[ 0.004782] Detected VTPI L-cache on CPU53
[ 0.004782] CPU55: found redistributor 55 region 0:0x0000000038880000
[ 0.004782] CPU55: Biontec secondary processor 0x0000000055 [0x410f4034]
[ 0.004782] Detected VTPI L-cache on CPU55
[ 0.004782] CPU57: found redistributor 57 region 0:0x0000000038880000
[ 0.004782] CPU57: Biontec secondary processor 0x0000000057 [0x410f4034]
[ 0.004782] Detected VTPI L-cache on CPU57
[ 0.004782] CPU59: found redistributor 59 region 0:0x0000000038880000
[ 0.0047
```

Demo – Linux, Sync signals visualization and FPS

- ▶ Great for CI and debugging purposes
- ▶ Host: `$ GSTFPS=1 ./stream-gst 1344 635 0 1 2`



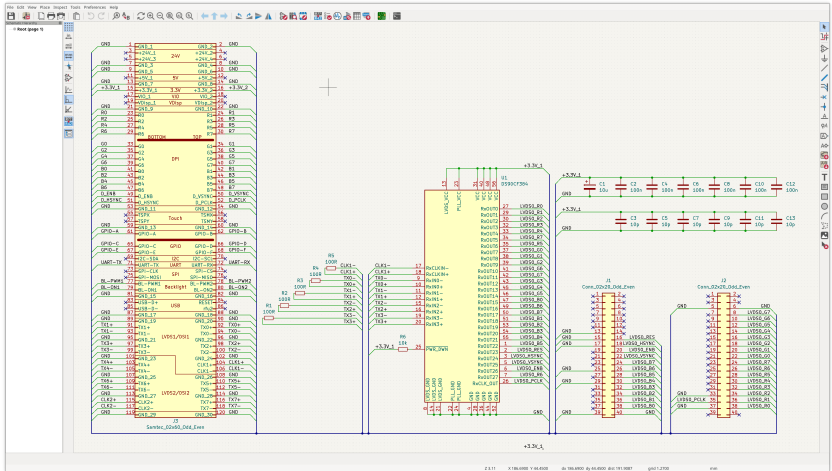
Demo – Weston, with FPS, with FPS

- ▶ Host: `$ GSTFPS=1 ./stream-gst 1344 635 0 1 2`
- ▶ The image stretch left and right is CRTC leaving the data lines in pre-sync state during sync period instead of setting them to zero



KiCad – Adapter board schematic

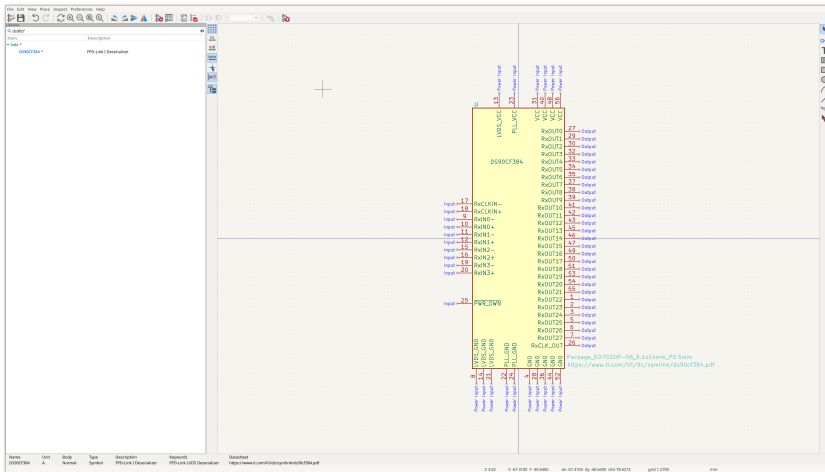
Make sure you run ERC



It is a really good idea to learn KiCad key bindings (it is faster)

KiCad – Schematic symbol design

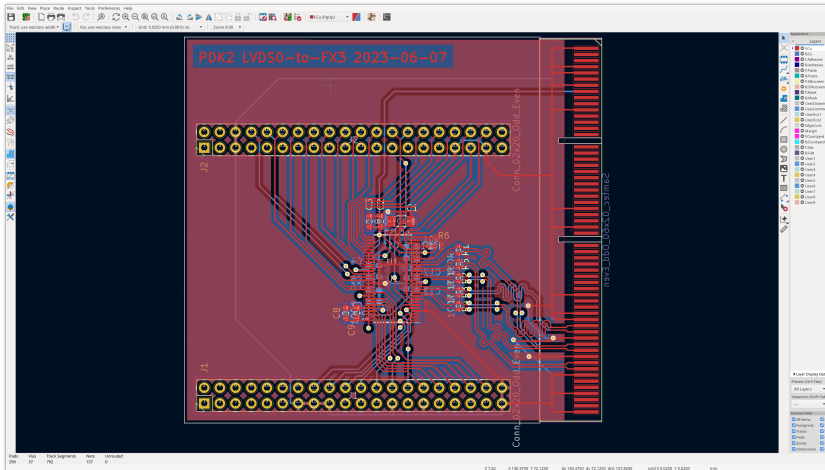
LVDS de-serializer schematic symbols may not be in the KiCad library



Derive symbol from existing high quality symbols in the library

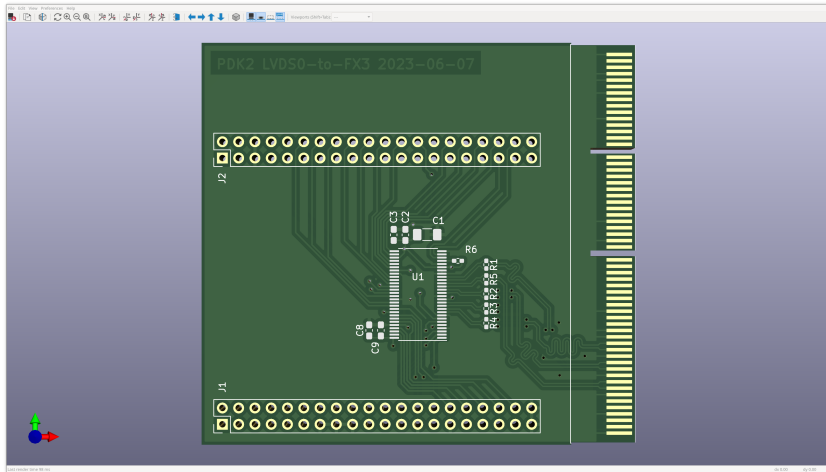
KiCad – Adapter board PCB

Make sure you run DRC



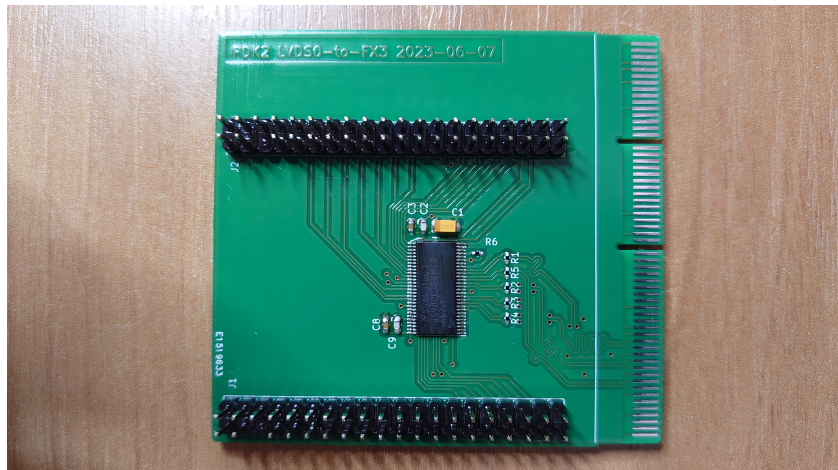
KiCad – 3D view

Soldering TSSOP56 package at home takes practice and patience
Same for 0402 passive components like resistors, don't inhale them

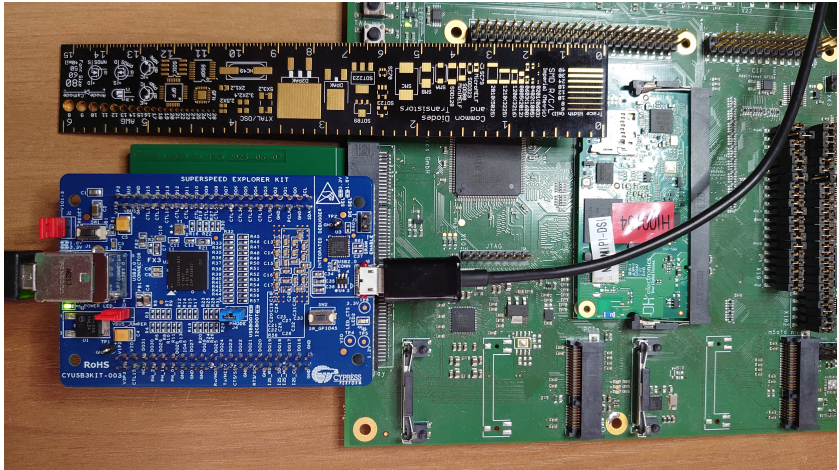


Get a good flux, soldering iron, fume extractor, maybe a loupe ...

KiCad – Populated board



KiCad – Entire assembly



Stream from the device looks as expected, no surprises there.

Next steps – MIPI DSI

- ▶ Packet based
- ▶ Multiple different PHY options (C-PHY/D-PHY/M-PHY)
- ▶ Likely target D-PHY as it is most common in embedded
- ▶ Would require FPGA PHY \approx HS/LP RX, byte aligner, depacketizer
- ▶ HS/LP input into FPGA can be implemented using a few termination resistors and suitable FPGA with the right IO voltage on the right banks
- ▶ Multiple FPGA CSI-2 D-PHY RX exists already:
 - ▶ CircuitValley [link]
 - ▶ gatecat [link]
- ▶ Extracted packets can be fed into FX3 and captured on PC
- ▶ sigrok protocol decoder support might be useful here too

Wrap up

- ▶ Hardware is obtainable – FX3 kit and adapter board
- ▶ Software is available
- ▶ Build is easy

End

Thank you for your attention

Questions ?

Marek Vasut <marek.vasut+eoss23@mailbox.org>